

Windham High School: 2017 NH YRBS Preliminary Report

Bullying, electronic bullying, and fighting: Time Trends, By Sex, and By Grade

Windham High School is in the Greater Derry Public Health Region and is served by the Bridges crisis center.

PRELIMINARY RESULTS (v1.2)

This report contains preliminary results for 2017. All 2017 results are subject to change when the CDC returns the final dataset to the State, expected in early 2018. Please use caution when referring to and using these preliminary data until the final data set is received from the CDC. This report contains results for all questions asked on any YRBS survey since 2007. Note, access to regional level results were first made available in 2015 and are not available prior to that year.

State and Regional Estimates

State and Regional estimates are calculated from a random sample developed using scientific survey methods. These methods ensure the respondents are representative of students in the region in the State. These estimates account for student, classroom, school, and regional factors. The random sample is not designed to provide school level estimates.

School Level Estimates

The 2017 survey response rate at Windham High School was 87% where 786 of 901 students took the survey. **School level estimates are unweighted and based on a convenience sample of students in attendance, and not opting out of participation in the YRBS, on a given date and time during the school year.** However, because participation was relatively high the school estimates may still be representative of the entire school population. Results could be less representative if specific classrooms or classroom types were not included in the survey. We have attempted to estimate how many students in the school actually fall within each risk category. We did this by scaling up the students responding in the survey using school enrollment data.

Estimates number and percentage were suppressed (*) if the underlying sample size was <60 respondents and/or cell sizes are between 1 and 5.

Help and assistance

Questions on this report (NH YRBS Community level preliminary report)

Health Statistics and Data Management

Division of Public Health Services - State of NH

NH.YouthRiskBehaviorSurvey@dhhs.nh.gov; (603) 271-4988;

Additional technical assistance for YRBS related information

NH Center for Excellence

nhcenterforexcellence@jsi.com; (603) 573-3300

<http://nhcenterforexcellence.org/center-services/request-ta/>

Change Log

v1.2: Indicators revised to display by CDC question direction as greater risk; and, revised methodology to more accurately display number of students projected based on school enrollment data.

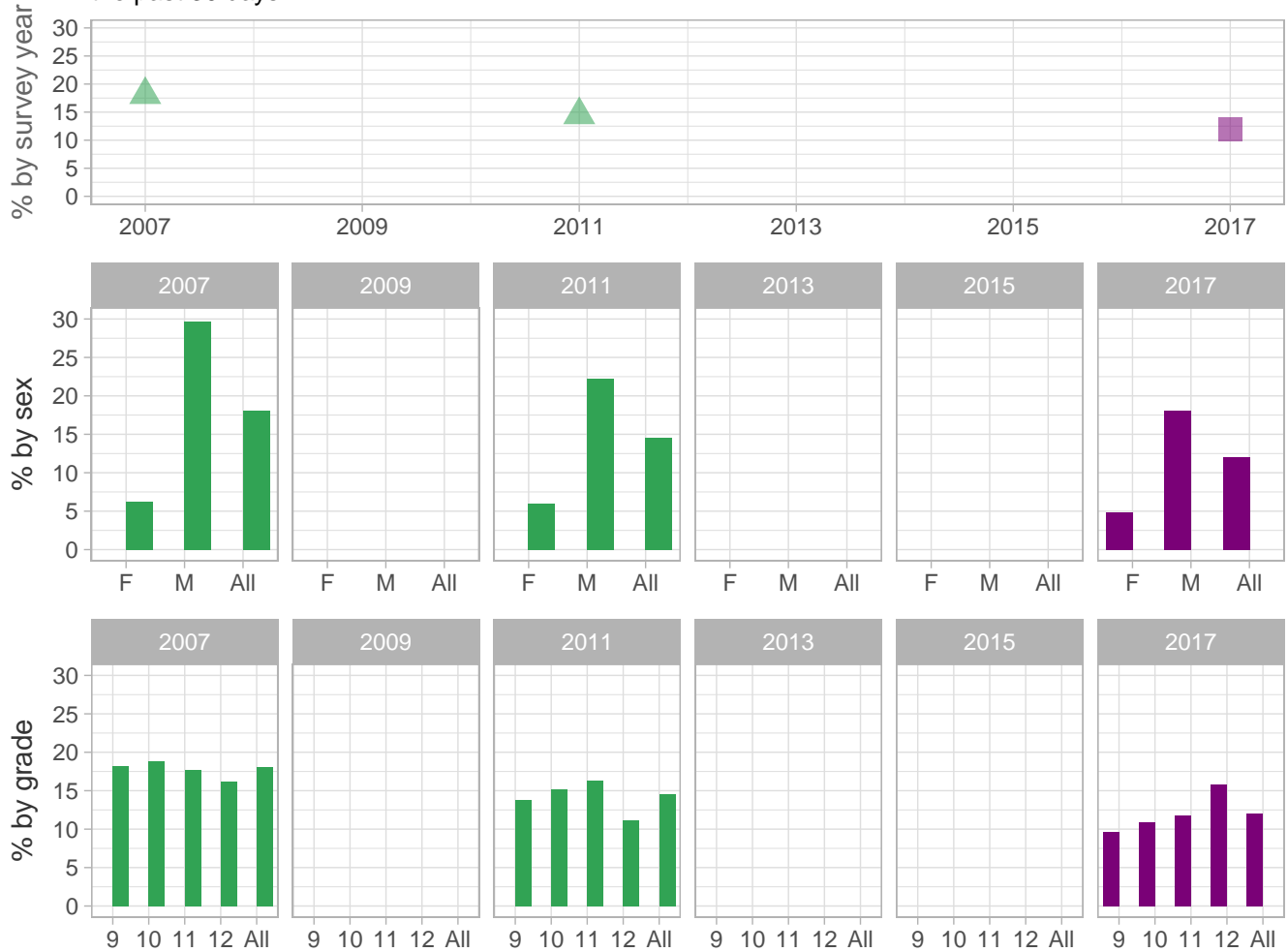
v1.1: School estimates corrected to include CDC sample - report sent 8/31-9/1

v1.0: Initial report sent 8/29

 School  Region  NH

Bullying, electronic bullying, and fighting

Percent of students who carried a weapon (such as, a gun, knife, or club) on at least 1 day during the past 30 days



School-level by Sex and Grade

		2009(pct)	2011(pct)	2013(pct)	2015(pct)	2017(pct)	2017(n)
By sex	F	-	*	-	-	4.9	21
	M	-	*	-	-	18.1	85
By grade	9th	-	*	-	-	9.6	26
	10th	-	*	-	-	10.9	25
	11th	-	-	-	-	11.8	26
	12th	-	-	-	-	15.8	30
	All	-	*	-	-	12.0	109

How the question was actually asked: During the past 30 days, on how many days did you carry a weapon such as a gun, knife, or club?; a: 0 days ; b: 1 day ; c: 2 or 3 days ; d: 4 or 5 days ; e: 6 or more days;

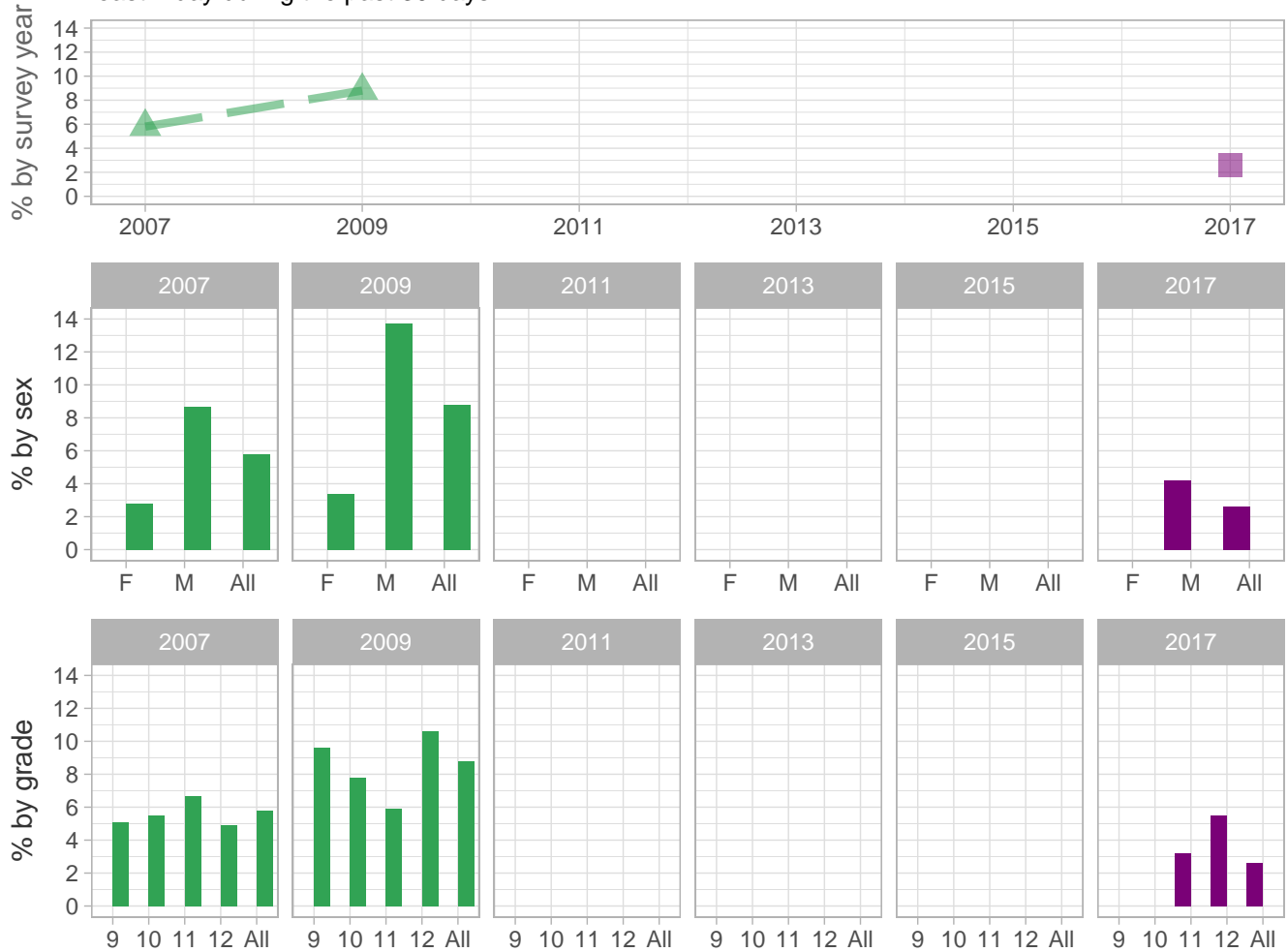
Percent (pct): numerator: bcde; denominator: abcde; qid: 13; 2007q13; 2009q999; 2011q13; 2013q999; 2015q999; 2017q15; Number (n): Estimated number of students projected based on school enrollment data.

-: Data not available; *: Suppressed due to small cell sizes.

 School
  Region
  NH

Bullying, electronic bullying, and fighting

Percent of students who carried a weapon on school property (such as, a gun, knife, or club) on at least 1 day during the past 30 days



School-level by Sex and Grade

		2009(pct)	2011(pct)	2013(pct)	2015(pct)	2017(pct)	2017(n)
By sex	F	-	-	-	-	*	*
	M	-	-	-	-	4.2	20
By grade	9th	-	-	-	-	*	*
	10th	-	-	-	-	*	*
	11th	-	-	-	-	3.2	7
	12th	-	-	-	-	5.5	11
All	All	-	-	-	-	2.6	24

How the question was actually asked: During the past 30 days, on how many days did you carry a weapon such as a gun, knife, or club on school property?; a: 0 days ; b: 1 day ; c: 2 or 3 days ; d: 4 or 5 days ; e: 6 or more days;

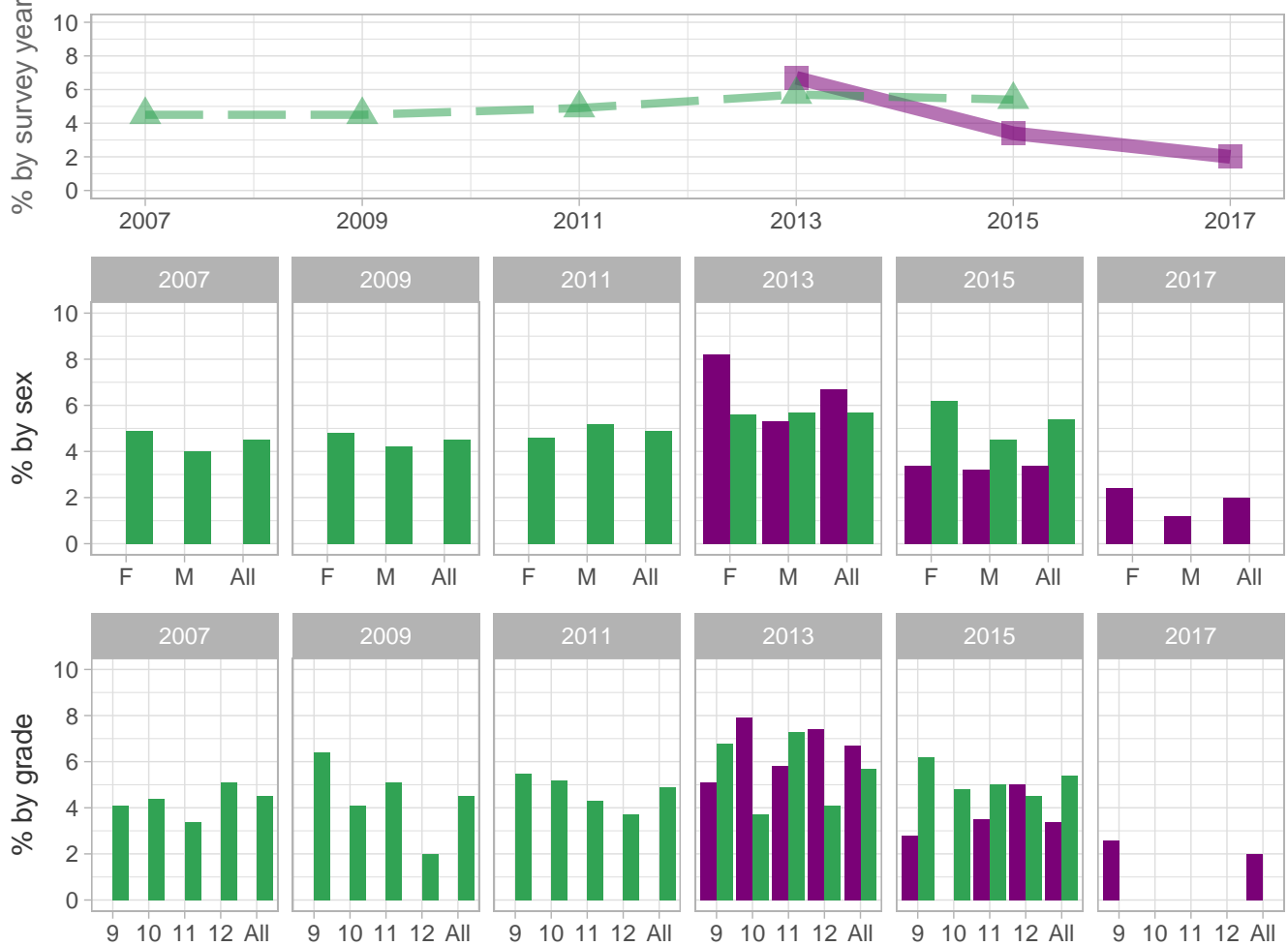
Percent (pct): numerator: bcde; denominator: abcde; qid: 15; 2007q15; 2009q13; 2011q999; 2013q999; 2015q999; 2017q16; Number (n): Estimated number of students projected based on school enrollment data.

-: Data not available; *: Suppressed due to small cell sizes.

 School
  Region
  NH

Bullying, electronic bullying, and fighting

Percent of students who did not go to school because they felt unsafe at school or on their way to or from school on at least 1 day during the past 30 days



School-level by Sex and Grade

		2009(pct)	2011(pct)	2013(pct)	2015(pct)	2017(pct)	2017(n)
By sex	F	-	*	8.2	3.4	2.4	11
	M	-	*	5.3	3.2	1.2	6
By grade	9th	-	*	5.1	2.8	2.6	7
	10th	-	*	7.9	*	*	*
	11th	-	-	5.8	3.5	*	*
	12th	-	-	7.4	5.0	*	*
All	All	-	*	6.7	3.4	2.0	19

How the question was actually asked: During the past 30 days, on how many days did you not go to school because you felt you would be unsafe at school or on your way to or from school?; a: 0 days ; b: 1 day ; c: 2 or 3 days ; d: 4 or 5 days ; e: 6 or more days;

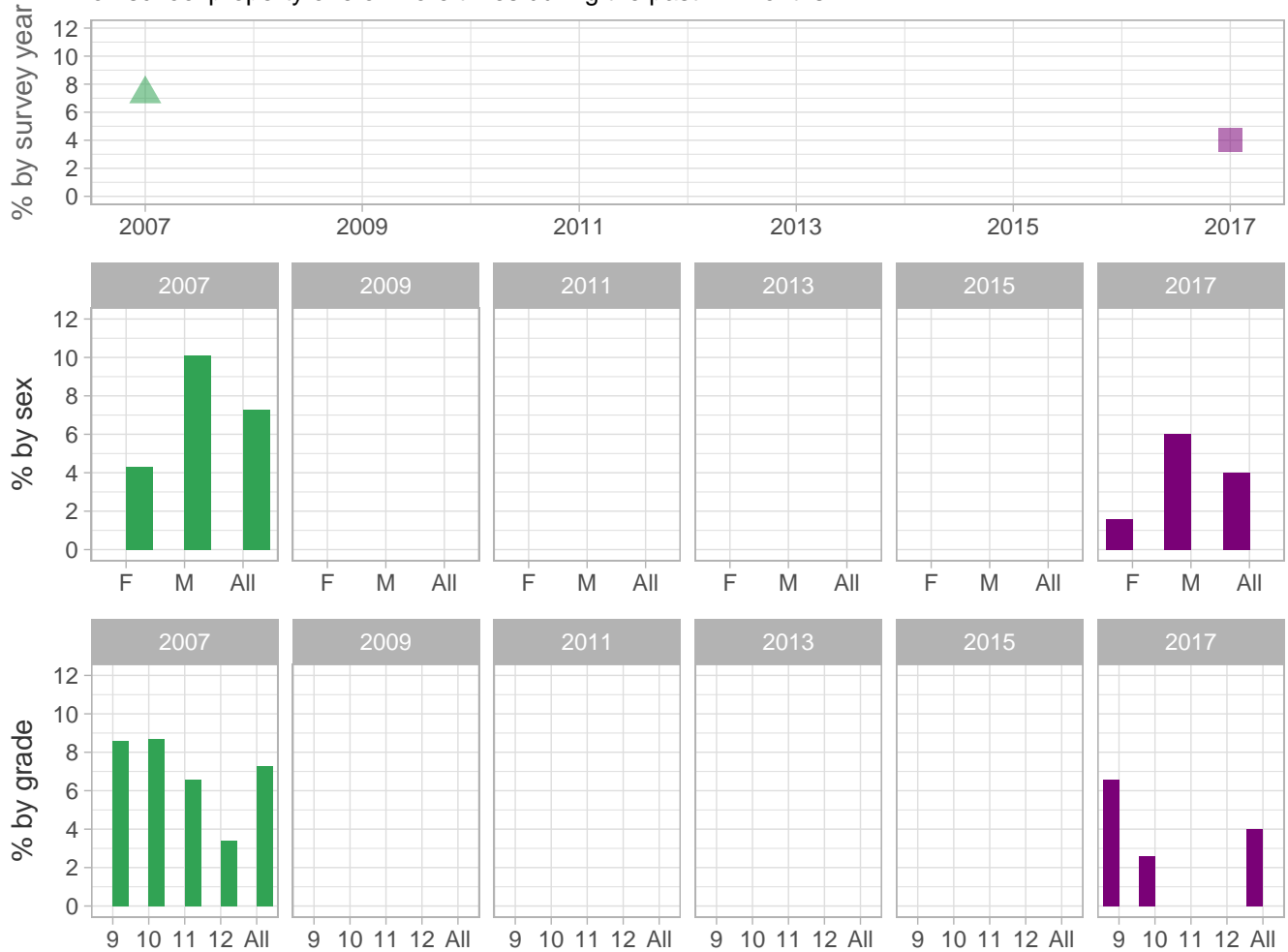
Percent (pct): numerator: bcde; denominator: abcde; qid: 16; 2007q16; 2009q14; 2011q14; 2013q15; 2015q15; 2017q17;
Number (n): Estimated number of students projected based on school enrollment data.

-: Data not available; *: Suppressed due to small cell sizes.

 School
  Region
  NH

Bullying, electronic bullying, and fighting

Percent of students who were threatened or injured with a weapon (such as, a gun, knife, or club) on school property one or more times during the past 12 months



School-level by Sex and Grade

		2009(pct)	2011(pct)	2013(pct)	2015(pct)	2017(pct)	2017(n)
By sex	F	-	-	-	-	1.6	7
	M	-	-	-	-	6.0	28
By grade	9th	-	-	-	-	6.6	18
	10th	-	-	-	-	2.6	6
	11th	-	-	-	-	*	*
	12th	-	-	-	-	*	*
All	All	-	-	-	-	4.0	36

How the question was actually asked: During the past 12 months, how many times has someone threatened or injured you with a weapon such as a gun, knife, or club on school property?; a: 0 times ; b: 1 time ; c: 2 or 3 times ; d: 4 or 5 times ; e: 6 or 7 times ; f: 8 or 9 times ; g: 10 or 11 times ; h: 12 or more times;

Percent (pct): numerator: bcdefgh; denominator: abcdefgh; qid: 17; 2007q17; 2009q999; 2011q999; 2013q999; 2015q999; 2017q18;

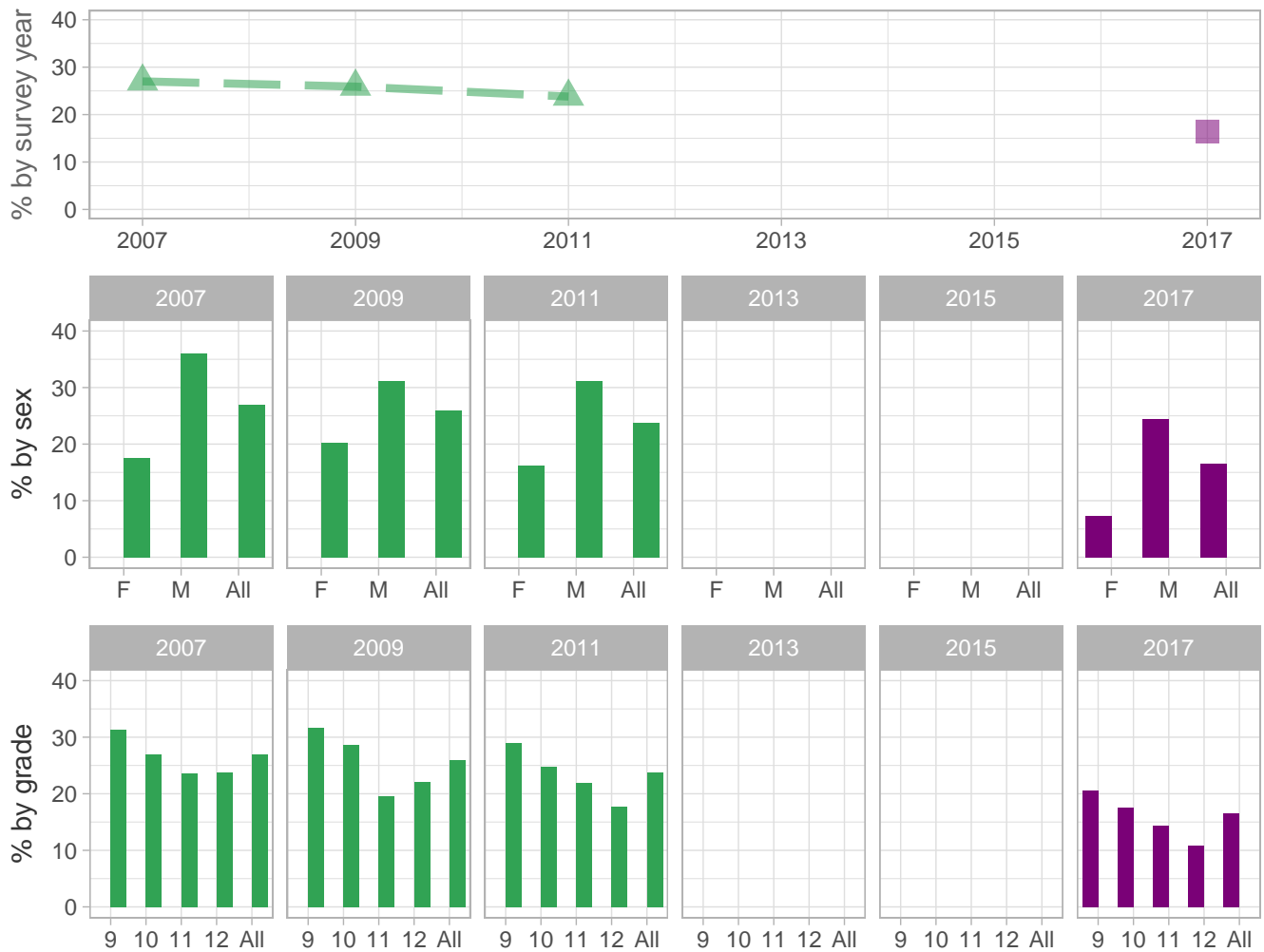
Number (n): Estimated number of students projected based on school enrollment data.

-: Data not available; *: Suppressed due to small cell sizes.

 School  Region  NH

Bullying, electronic bullying, and fighting

Percent of students who were in a physical fight one or more times during the past 12 months



School-level by Sex and Grade

		2009(pct)	2011(pct)	2013(pct)	2015(pct)	2017(pct)	2017(n)
By sex	F	-	*	-	-	7.3	32
	M	-	*	-	-	24.4	114
By grade	9th	-	*	-	-	20.5	55
	10th	-	*	-	-	17.6	40
	11th	-	-	-	-	14.4	32
	12th	-	-	-	-	10.9	21
All	All	-	*	-	-	16.5	150

How the question was actually asked: During the past 12 months, how many times were you in a physical fight?; a: 0 times ; b: 1 time ; c: 2 or 3 times ; d: 4 or 5 times ; e: 6 or 7 times ; f: 8 or 9 times ; g: 10 or 11 times ; h: 12 or more times;

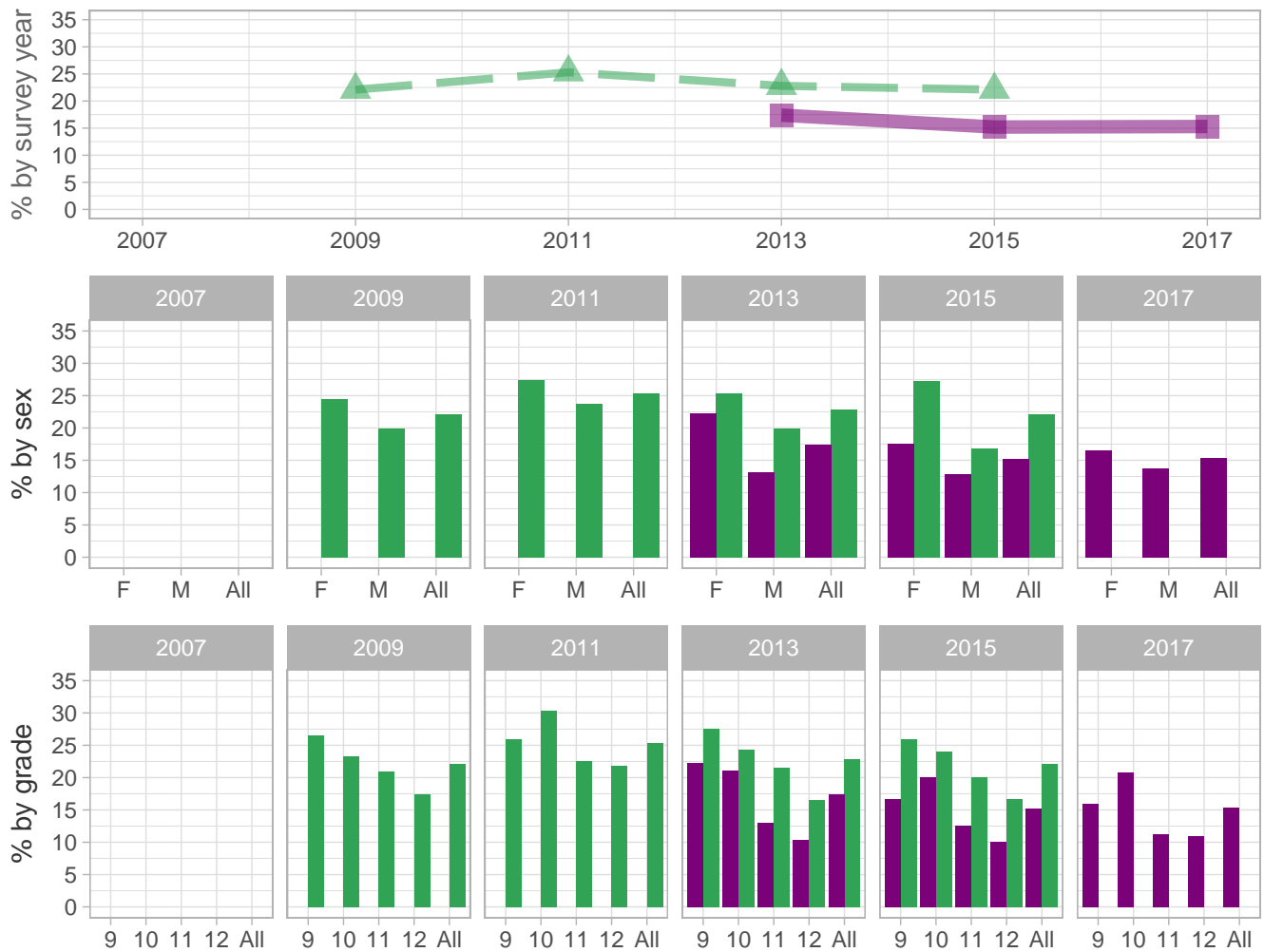
Percent (pct): numerator: bcdefgh; denominator: abcdefgh; qid: 19; 2007q19; 2009q15; 2011q15; 2013q999; 2015q999; 2017q19; Number (n): Estimated number of students projected based on school enrollment data.

-: Data not available; *: Suppressed due to small cell sizes.

 School
  Region
  NH

Bullying, electronic bullying, and fighting

Percent of students who were bullied on school property during the 12 months



School-level by Sex and Grade

		2009(pct)	2011(pct)	2013(pct)	2015(pct)	2017(pct)	2017(n)
By sex	F	-	*	22.2	17.6	16.6	71
	M	-	*	13.1	12.8	13.8	64
By grade	9th	-	*	22.3	16.7	15.9	42
	10th	-	*	21.1	20.1	20.8	47
	11th	-	-	13.0	12.5	11.2	25
	12th	-	-	10.4	10.1	10.9	21
All	All	-	*	17.4	15.2	15.3	138

How the question was actually asked: During the past 12 months, have you ever been bullied on school property?; a: Yes ; b: No;

Percent (pct): numerator: a; denominator: ab; qid: 100; 2007q999; 2009q20; 2011q21; 2013q22; 2015q23; 2017q26;

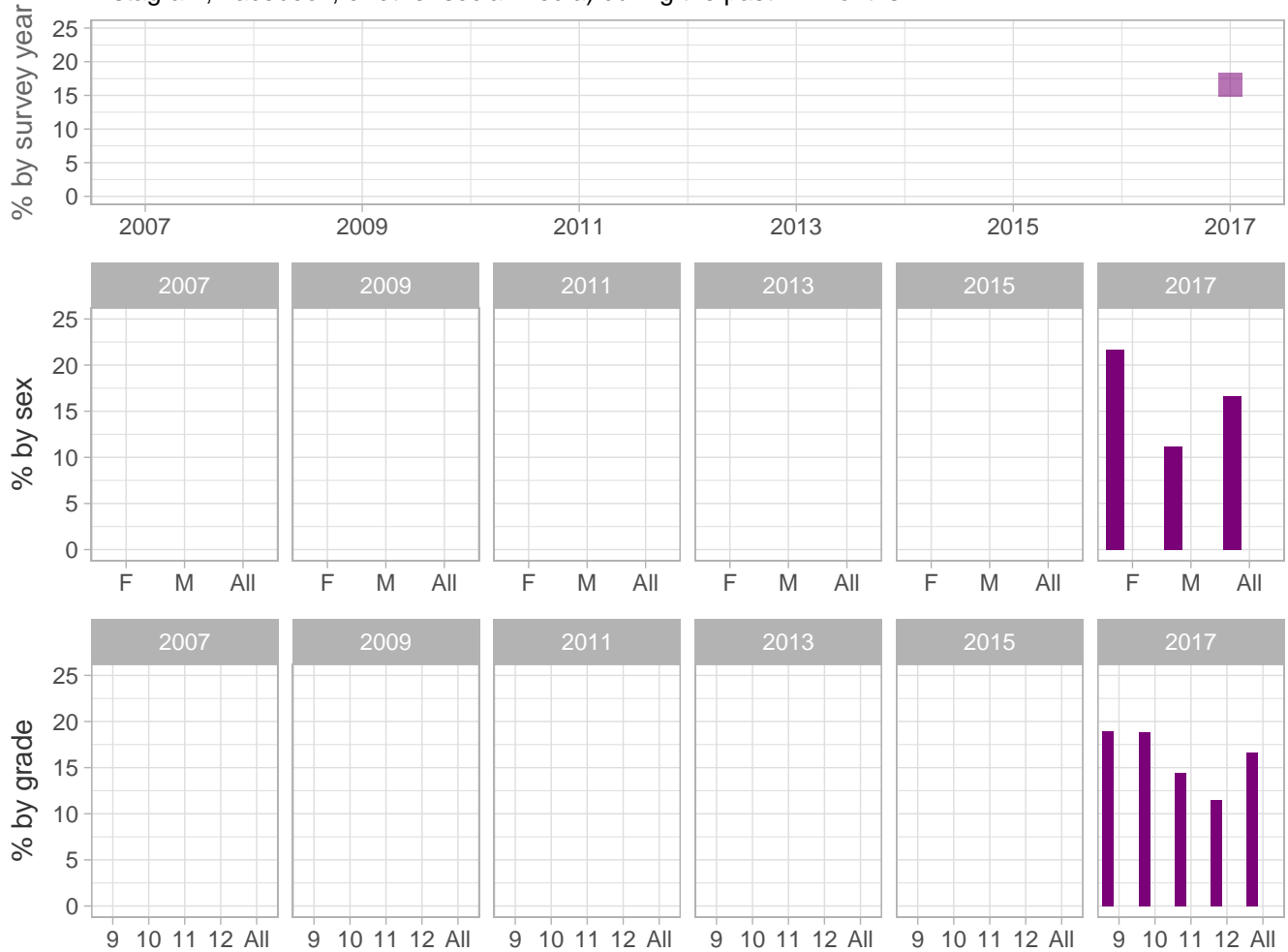
Number (n): Estimated number of students projected based on school enrollment data.

-: Data not available; *: Suppressed due to small cell sizes.

 School
  Region
  NH

Bullying, electronic bullying, and fighting

Percent of students who were electronically bullied (counting being bullied through texting, Instagram, Facebook, or other social media) during the past 12 months



School-level by Sex and Grade

		2009(pct)	2011(pct)	2013(pct)	2015(pct)	2017(pct)	2017(n)
By sex	F	-	-	-	-	21.7	93
	M	-	-	-	-	11.2	53
By grade	9th	-	-	-	-	19.0	50
	10th	-	-	-	-	18.8	42
	11th	-	-	-	-	14.4	32
	12th	-	-	-	-	11.5	23
All	All	-	-	-	-	16.6	150

How the question was actually asked: During the past 12 months, have you ever been electronically bullied? (Count being bullied through texting, Instagram, Facebook, or other social media.); a: Yes ; b: No;

Percent (pct): numerator: a; denominator: ab; qid: 184; 2007q999; 2009q999; 2011q999; 2013q999; 2015q999; 2017q27;

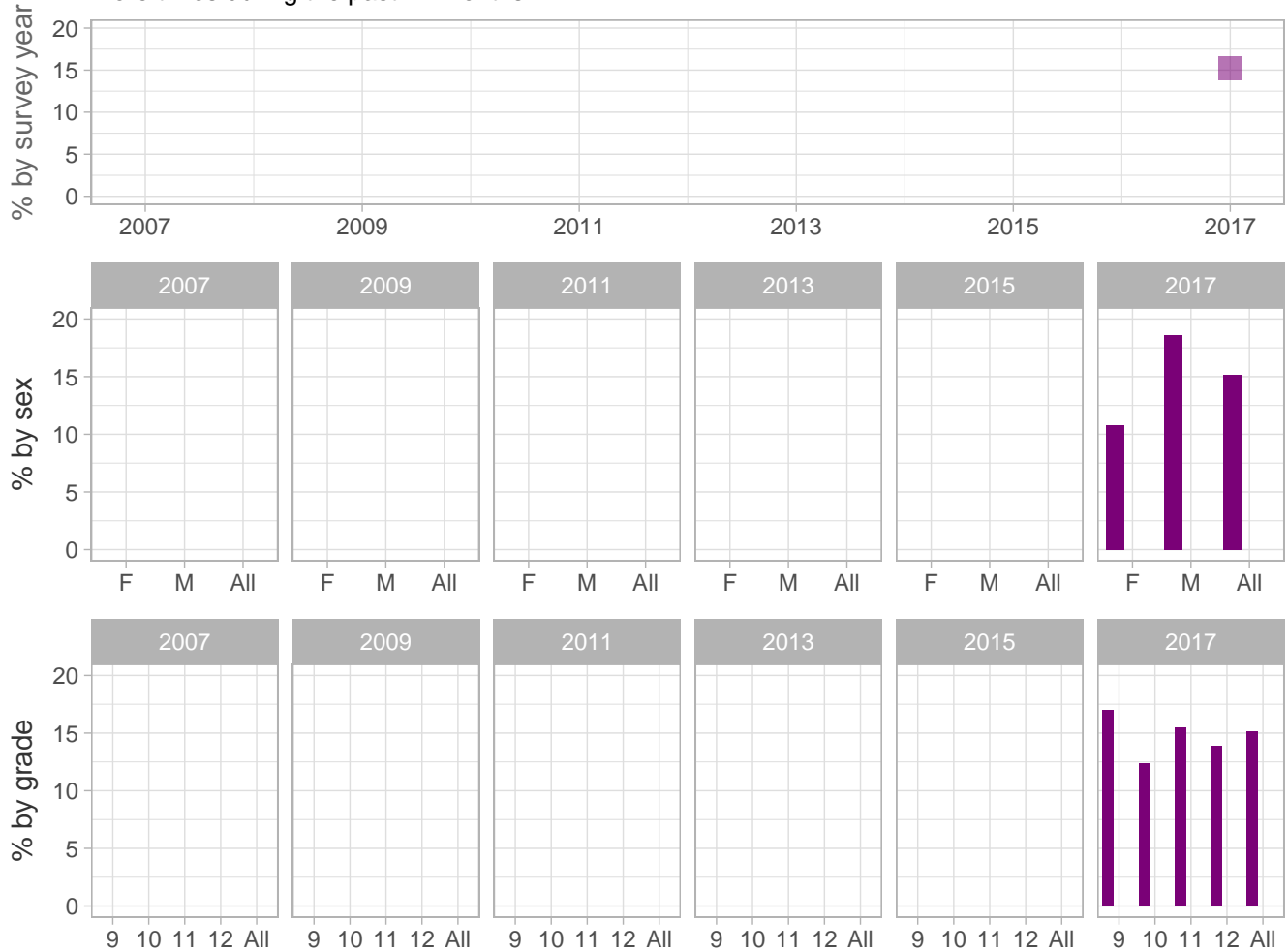
Number (n): Estimated number of students projected based on school enrollment data.

-: Data not available; *: Suppressed due to small cell sizes.

 School
  Region
  NH

Bullying, electronic bullying, and fighting

Percent of students who had a concussion from playing a sport or being physically active one or more times during the past 12 months



School-level by Sex and Grade

		2009(pct)	2011(pct)	2013(pct)	2015(pct)	2017(pct)	2017(n)
By sex	F	-	-	-	-	10.8	47
	M	-	-	-	-	18.6	87
By grade	9th	-	-	-	-	17.0	45
	10th	-	-	-	-	12.4	28
	11th	-	-	-	-	15.5	34
	12th	-	-	-	-	13.9	27
All	All	-	-	-	-	15.2	138

How the question was actually asked: During the past 12 months, how many times did you have a concussion from playing a sport or being physically active?; a: 0 times ; b: 1 time ; c: 2 times ; d: 3 times ; e: 4 or more times;

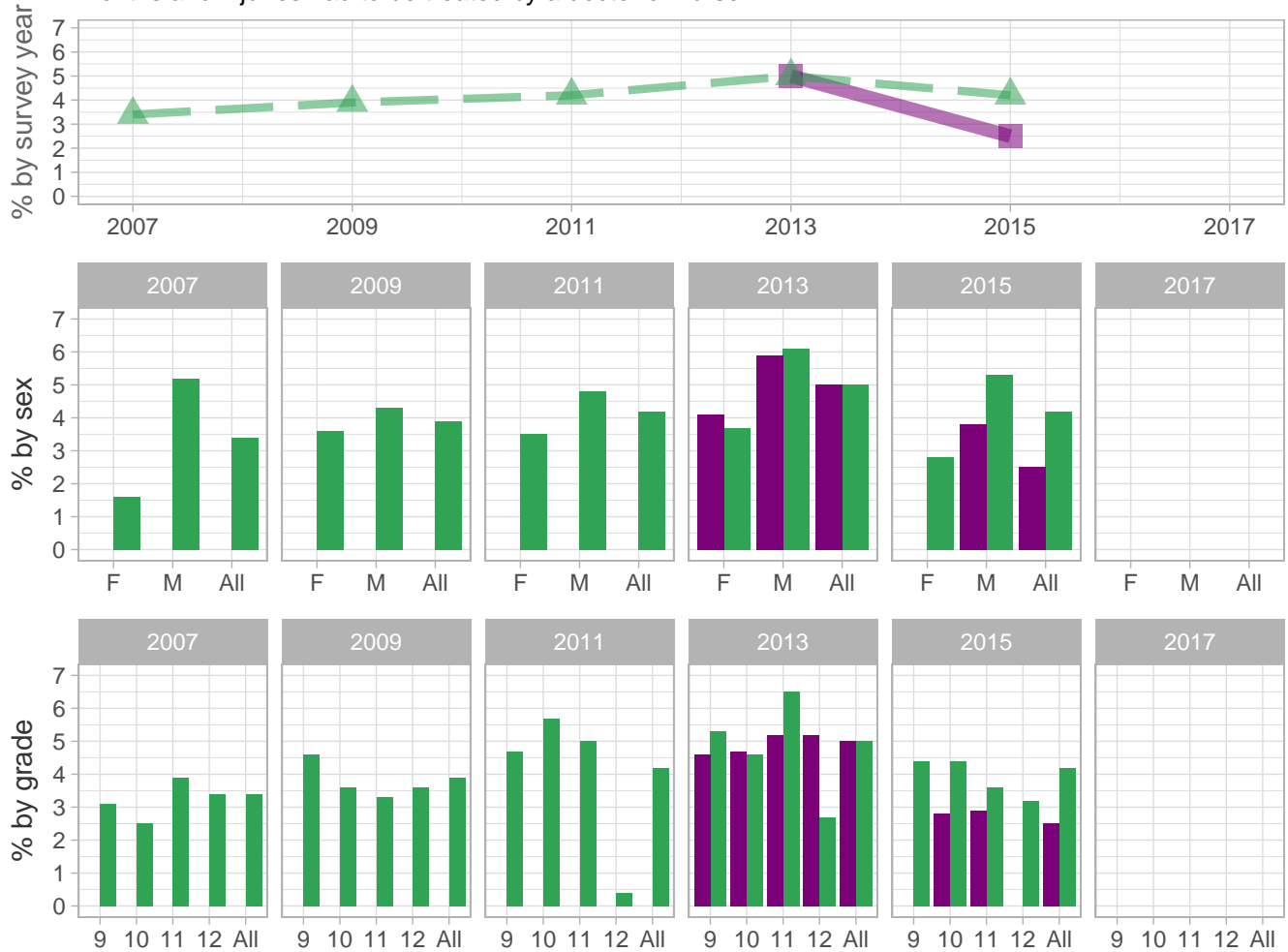
Percent (pct): numerator: bcde; denominator: abcde; qid: 195; 2007q999; 2009q999; 2011q999; 2013q999; 2015q999; 2017q73; Number (n): Estimated number of students projected based on school enrollment data.

-: Data not available; *: Suppressed due to small cell sizes.

 School
  Region
  NH

Bullying, electronic bullying, and fighting

Percent of students who were injured in a physical fight one or more times during the past 12 months and injuries had to be treated by a doctor or nurse



School-level by Sex and Grade

		2009(pct)	2011(pct)	2013(pct)	2015(pct)	2017(pct)	2017(n)
By sex	F	-	*	4.1	*	-	-
	M	-	*	5.9	3.8	-	-
By grade	9th	-	*	4.6	*	-	-
	10th	-	*	4.7	2.8	-	-
	11th	-	-	5.2	2.9	-	-
	12th	-	-	5.2	*	-	-
All	All	-	*	5.0	2.5	-	-

How the question was actually asked: During the past 12 months, how many times were you in a physical fight in which you were injured and had to be treated by a doctor or nurse?; a: 0 times; b: 1 time; c: 2 or 3 times; d: 4 or 5 times; e: 6 or more times;

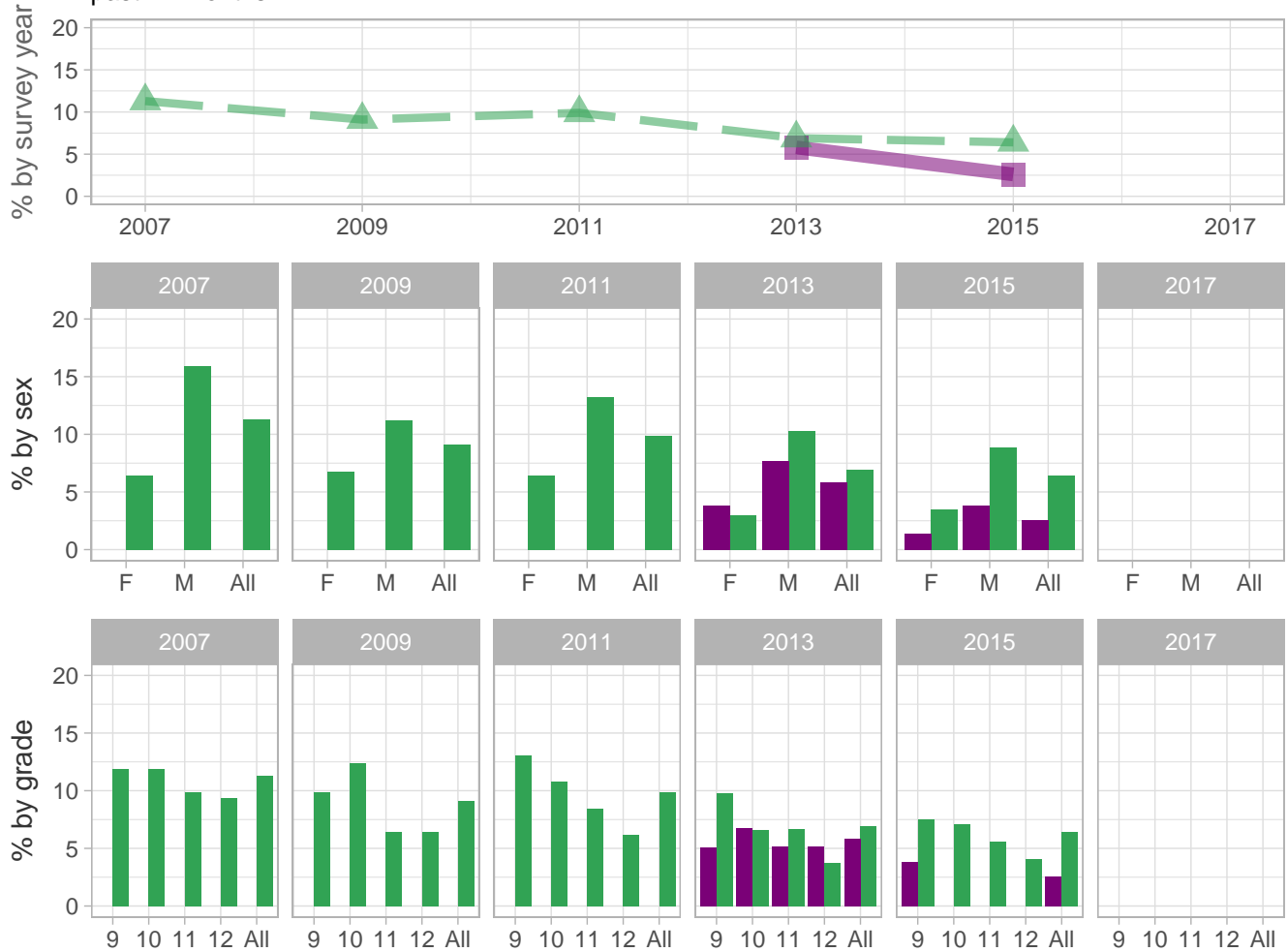
Percent (pct): numerator: bcde; denominator: abcde; qid: 20; 2007q20; 2009q16; 2011q16; 2013q16; 2015q16; 2017q999; Number (n): Estimated number of students projected based on school enrollment data.

-: Data not available; *: Suppressed due to small cell sizes.

 School
  Region
  NH

Bullying, electronic bullying, and fighting

Percent of students who were in a physical fight on school property one or more times during the past 12 months



School-level by Sex and Grade

		2009(pct)	2011(pct)	2013(pct)	2015(pct)	2017(pct)	2017(n)
By sex	F	-	*	3.8	1.4	-	-
	M	-	*	7.7	3.8	-	-
By grade	9th	-	*	5.1	3.8	-	-
	10th	-	*	6.8	*	-	-
	11th	-	-	5.2	*	-	-
	12th	-	-	5.2	*	-	-
All	All	-	*	5.8	2.6	-	-

How the question was actually asked: During the past 12 months, how many times were you in a physical fight on school property?; a: 0 times; b: 1 time; c: 2 or 3 times; d: 4 or 5 times; e: 6 or 7 times; f: 8 or 9 times; g: 10 or 11 times; h: 12 or more times;

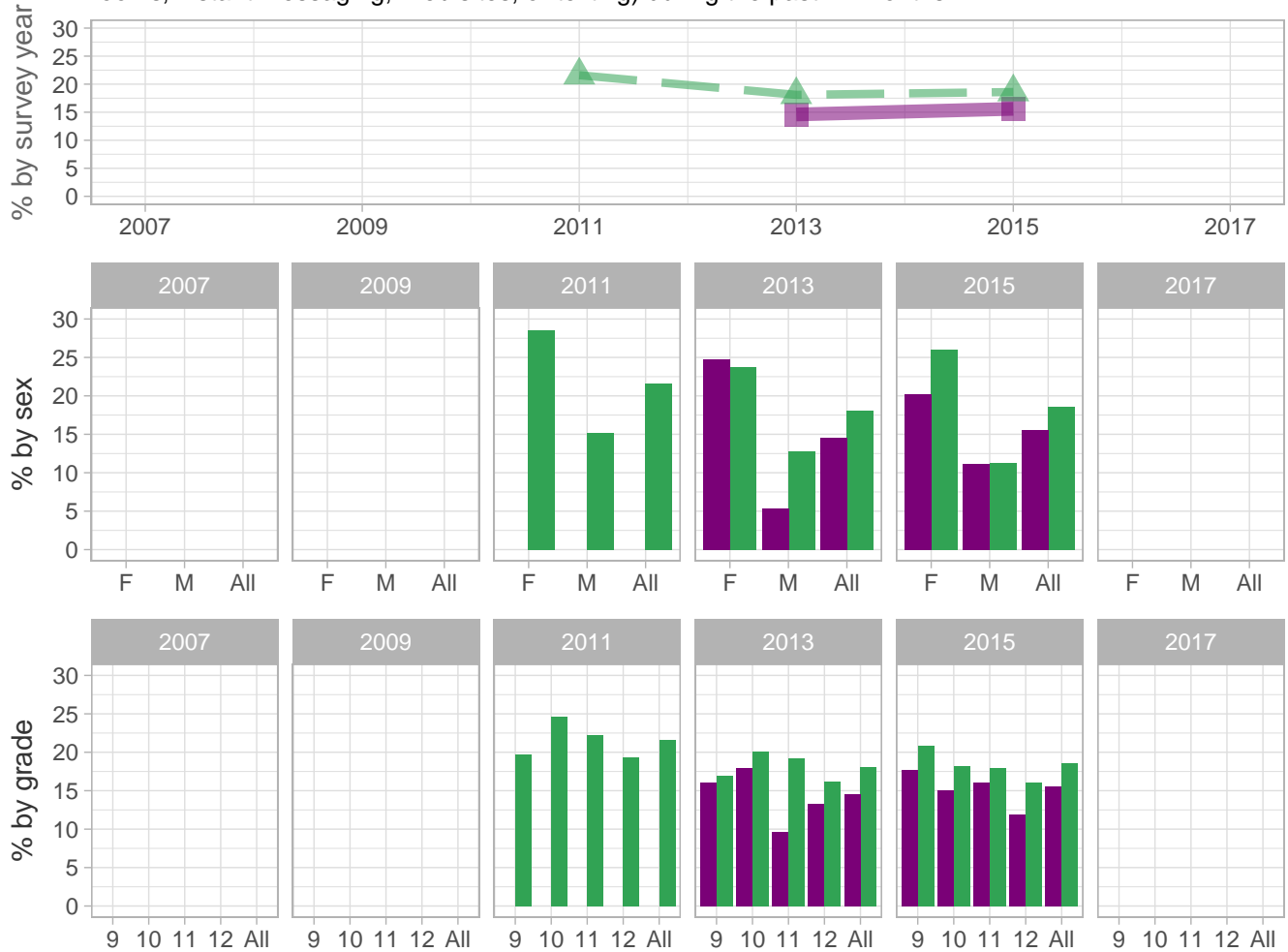
Percent (pct): numerator: bcdefgh; denominator: abcdefgh; qid: 21; 2007q21; 2009q17; 2011q17; 2013q17; 2015q17; 2017q999; Number (n): Estimated number of students projected based on school enrollment data.

-: Data not available; *: Suppressed due to small cell sizes.

 School
  Region
  NH

Bullying, electronic bullying, and fighting

Percent of students who were electronically bullied (counting being bullied through e-mail, chat rooms, instant messaging, Web sites, or texting) during the past 12 months



School-level by Sex and Grade

		2009(pct)	2011(pct)	2013(pct)	2015(pct)	2017(pct)	2017(n)
By sex	F	-	*	24.7	20.2	-	-
	M	-	*	5.3	11.1	-	-
By grade	9th	-	*	16.0	17.7	-	-
	10th	-	*	17.9	15.0	-	-
	11th	-	-	9.7	16.1	-	-
	12th	-	-	13.3	11.9	-	-
All	All	-	*	14.6	15.6	-	-

How the question was actually asked: During the past 12 months, have you ever been electronically bullied? (Count being bullied through e-mail, chat rooms, instant messaging, websites, or texting.); a: Yes; b: No;

Percent (pct): numerator: a; denominator: ab; qid: 126; 2007q999; 2009q999; 2011q22; 2013q23; 2015q24; 2017q999;

Number (n): Estimated number of students projected based on school enrollment data.

-: Data not available; *: Suppressed due to small cell sizes.

 School
  Region
  NH

Bullying, electronic bullying, and fighting

Percent of students who carried a gun on at least 1 day during the past 30 days



School-level by Sex and Grade

		2009(pct)	2011(pct)	2013(pct)	2015(pct)	2017(pct)	2017(n)
By sex	F	-	-	-	-	-	-
	M	-	-	-	-	-	-
By grade	9th	-	-	-	-	-	-
	10th	-	-	-	-	-	-
	11th	-	-	-	-	-	-
	12th	-	-	-	-	-	-
All	All	-	-	-	-	-	-

How the question was actually asked: During the past 30 days, on how many days did you carry a gun?; a: 0 days; b: 1 day; c: 2 or 3 days; d: 4 or 5 days; e: 6 or more days;

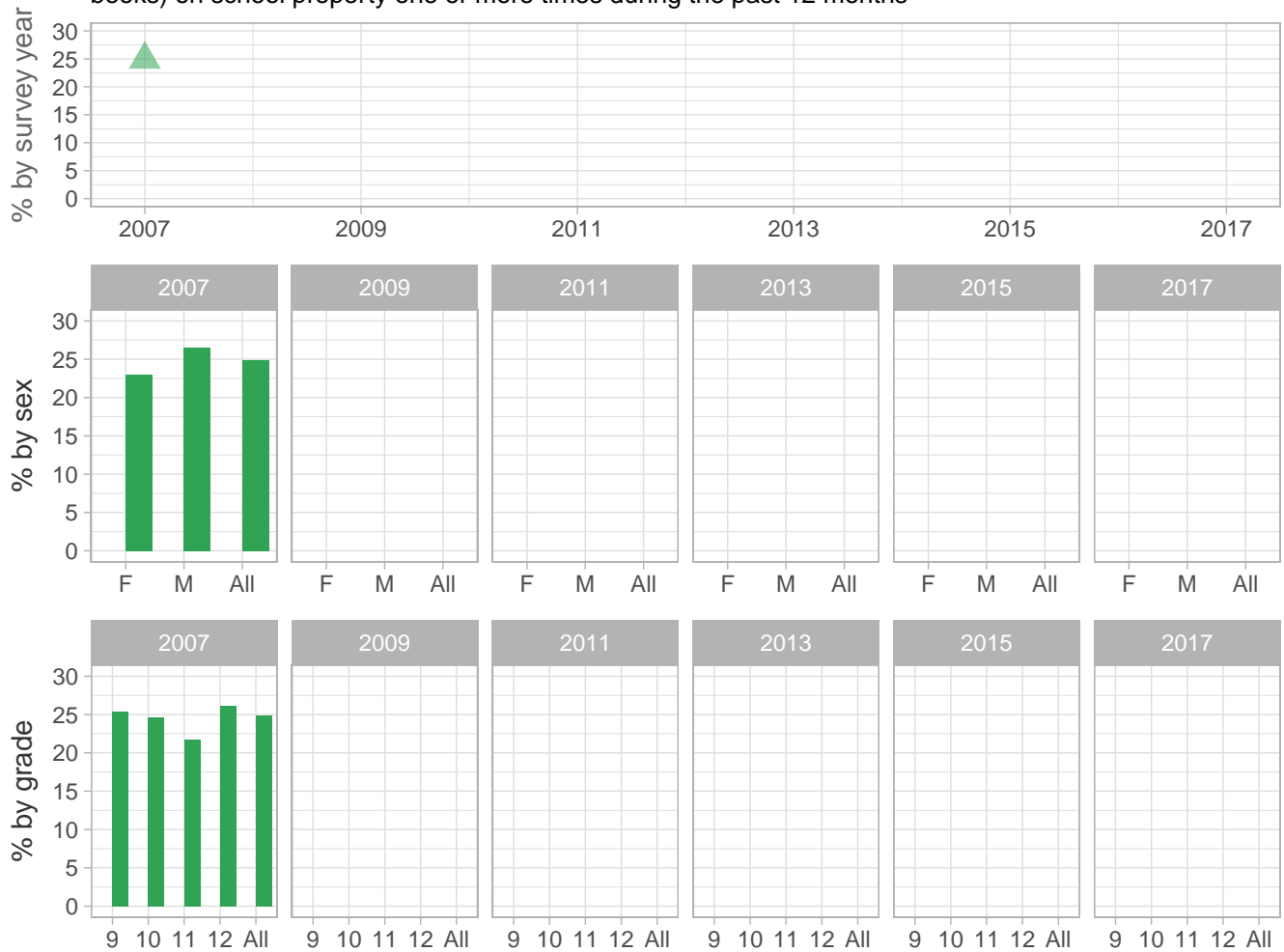
Percent (pct): numerator: bcde; denominator: abcde; qid: 14; 2007q14; 2009q999; 2011q999; 2013q999; 2015q999; 2017q999;
 Number (n): Estimated number of students projected based on school enrollment data.

-: Data not available; *: Suppressed due to small cell sizes.

 School
  Region
  NH

Bullying, electronic bullying, and fighting

Percent of students who had property stolen or deliberately damaged (such as, a car, clothing, or books) on school property one or more times during the past 12 months



School-level by Sex and Grade

		2009(pct)	2011(pct)	2013(pct)	2015(pct)	2017(pct)	2017(n)
By sex	F	-	-	-	-	-	-
	M	-	-	-	-	-	-
By grade	9th	-	-	-	-	-	-
	10th	-	-	-	-	-	-
	11th	-	-	-	-	-	-
	12th	-	-	-	-	-	-
All	All	-	-	-	-	-	-

How the question was actually asked: During the past 12 months, how many times has someone stolen or deliberately damaged your property such as your car, clothing, or books on school property?; a: 0 times; b: 1 time; c: 2 or 3 times; d: 4 or 5 times; e: 6 or 7 times; f: 8 or 9 times; g: 10 or 11 times; h: 12 or more times;

Percent (pct): numerator: bcdefgh; denominator: abcdefgh; qid: 18; 2007q18; 2009q999; 2011q999; 2013q999; 2015q999; 2017q999;

Number (n): Estimated number of students projected based on school enrollment data.

-: Data not available; *: Suppressed due to small cell sizes.